

FIGURE OM1. Location maps. (a) Structural framework of the Levant-Sinai region; red box marks area of (b) Geological framework of northern Israel, showing the location of Cretaceous magmatic centers in the Mt Carmel area.

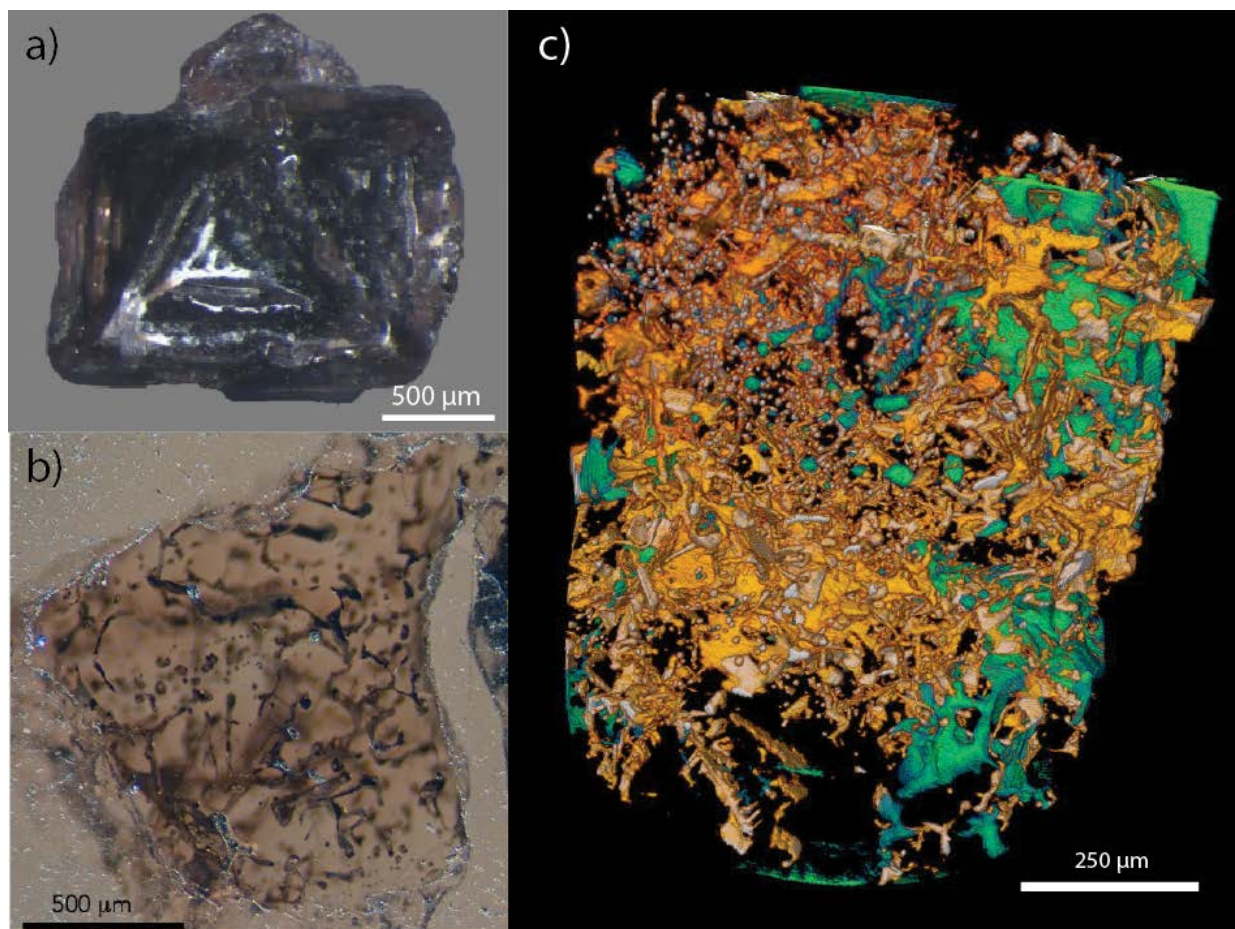


FIGURE OM2. (a) 2-mm crystal of Carmel Sapphire showing depressed faces typical of hopper growth; (b) section of a grain of Carmel Sapphire, showing the 3D network of melt pockets around and within skeletal/hopper crystals. After Xiong et al. (2017); (c) 3D- μ CT video of a fragment of Carmel Sapphire ca. 2 mm across. Colors correspond to silicate melts (orange), metallic melts (white) and voids, presumably fluid-filled (green).