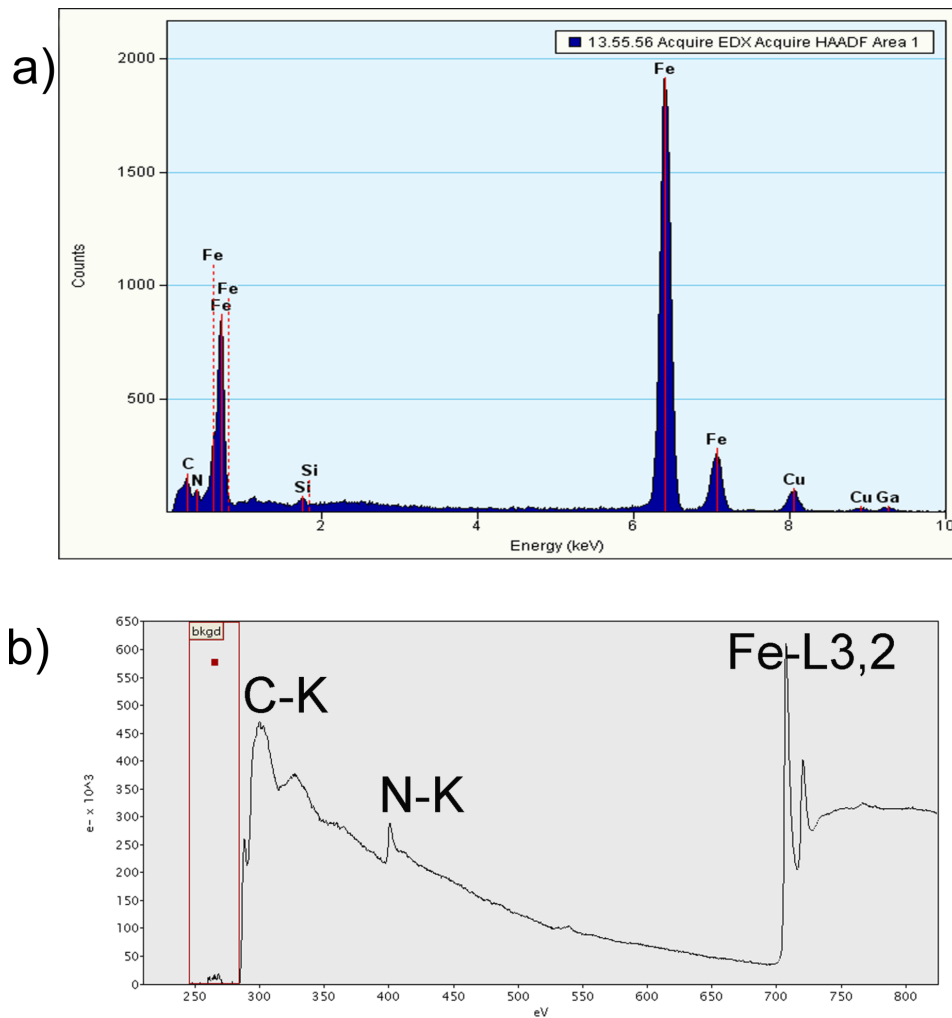


SUPPLEMENTARY FIGURE 1. Electron diffraction pattern from the iron nitride grain in the central part of foil #2327. The diffuse and smeared out diffraction spots suggest a mosaic structure to the grain with a slight misorientation of the individual crystal blocks.



SUPPLEMENTARY FIGURE 2. EDX (a) and EEL (b) spectra of iron carbonitride, $\text{Fe}_9(\text{N}_{0.8}\text{C}_{0.2})_4$. In addition to major Fe, N and C peaks, a smaller peak of Si at ~ 1.8 keV is present in the EDX spectrum. Foil #4588.