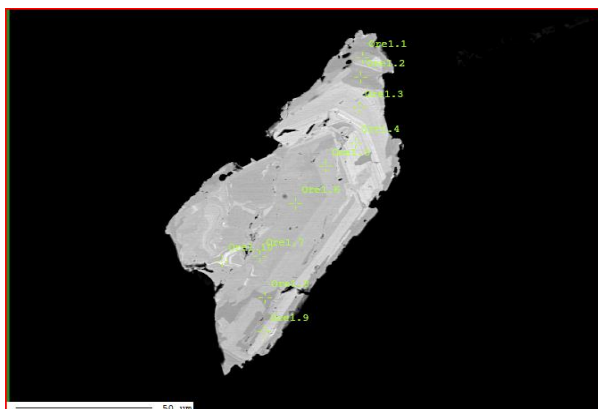


BU04 Strongly altered phosphatic nodule

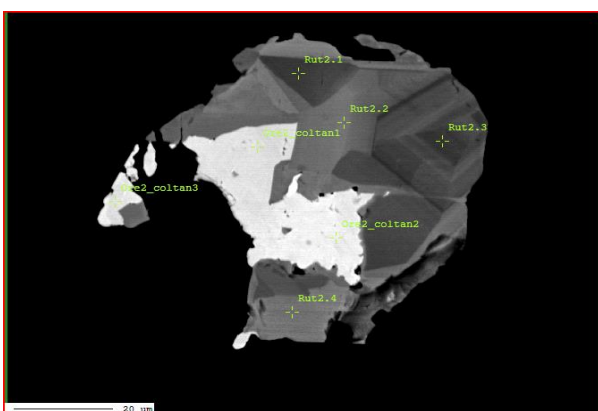
Ore1



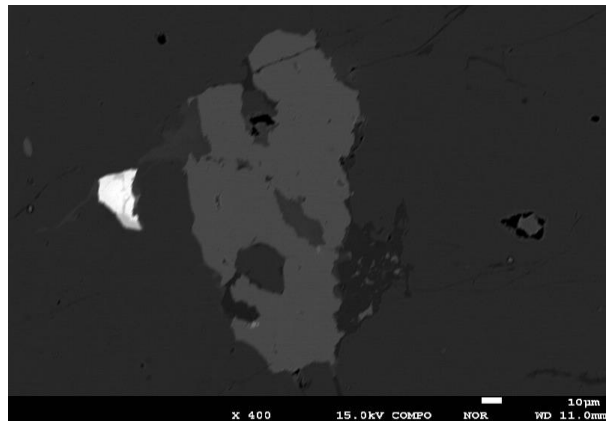
Supplemental Material S2b - mineral chemistry analysis spots

Analyzed crystals and respective analysis spots for the mineral chemistry data of Nb-Ta-oxide minerals from the Buranga pegmatite

Ore2



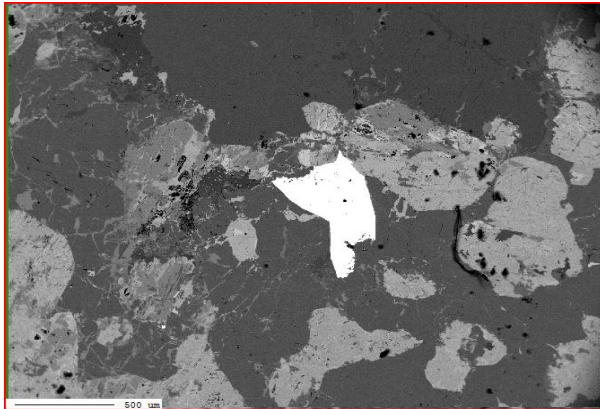
Ore3



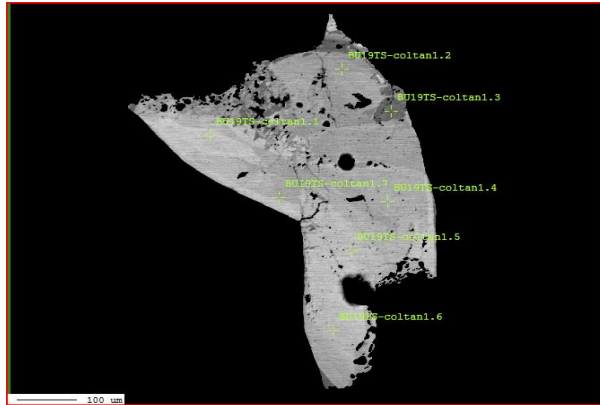
BU19TS

Partially altered phosphatic nodule

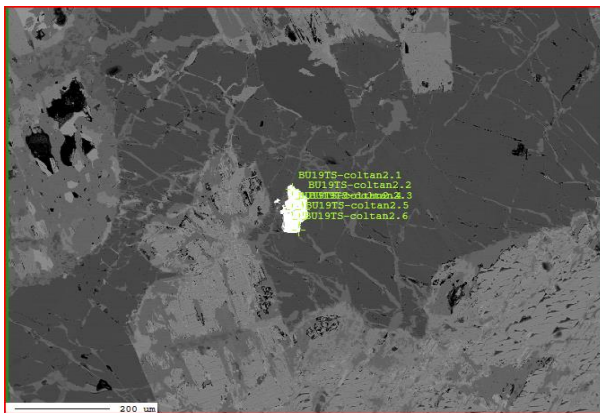
Ore1 - area



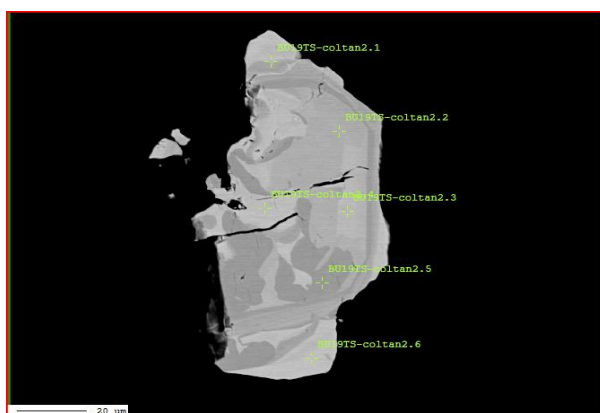
Ore1 - detail



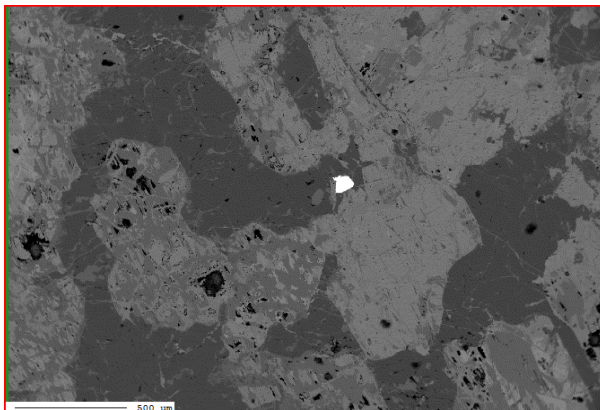
Ore2 - area



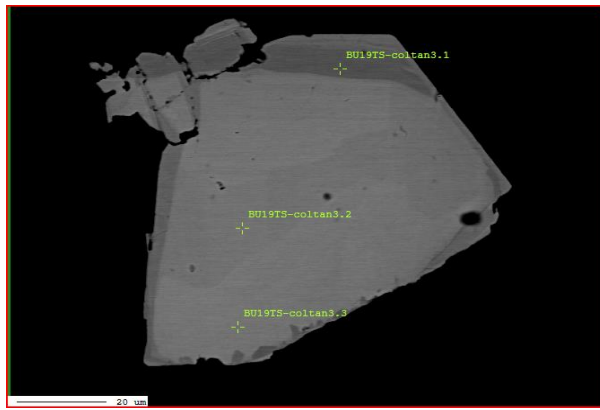
Ore2 - detail



Ore3 - area

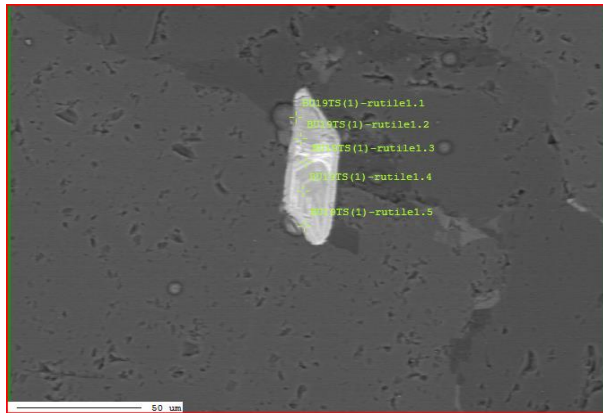


Ore3 - detail

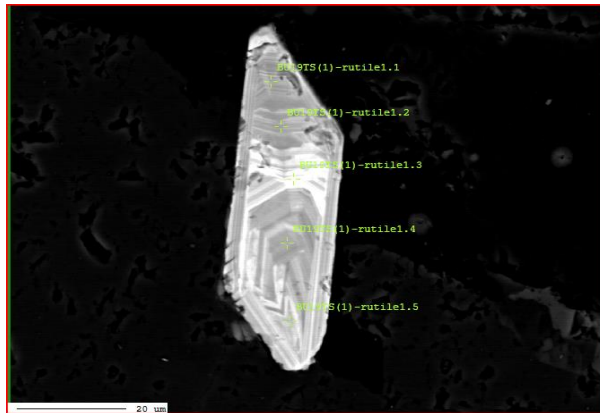


BU19TS(1) Partially altered phosphatic nodule

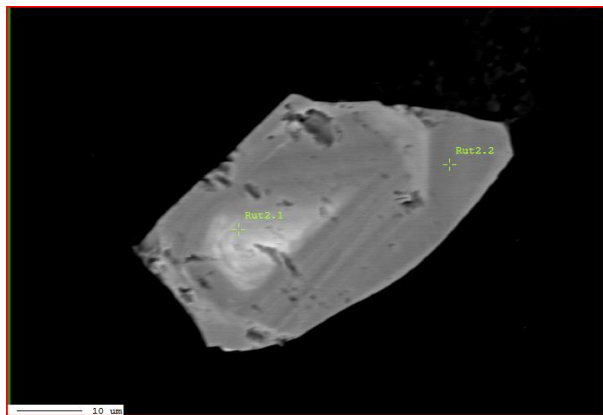
Ore1 - area



Ore1 - detail

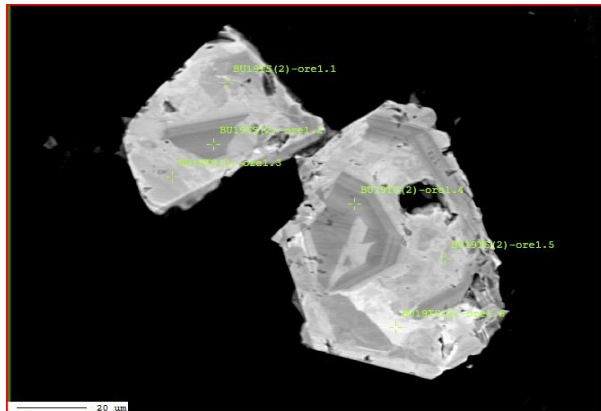


Ore2

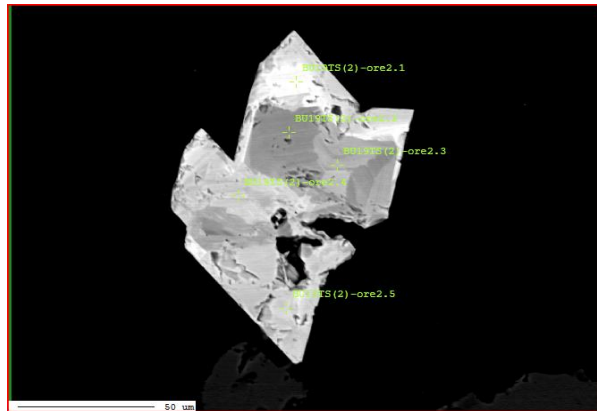


BU19TS(2) Partially altered phosphatic nodule

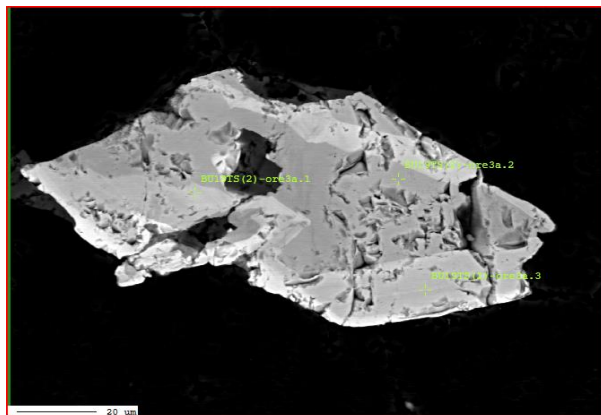
Ore1



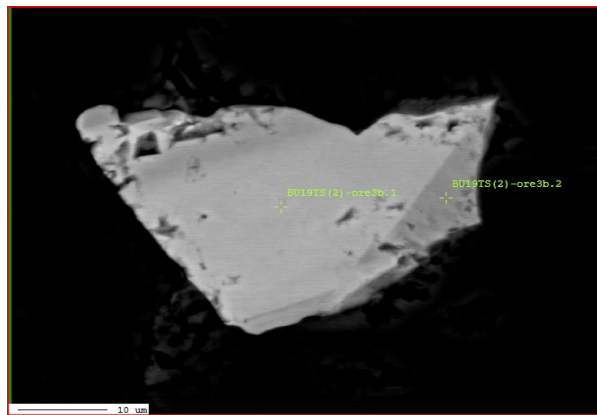
Ore2



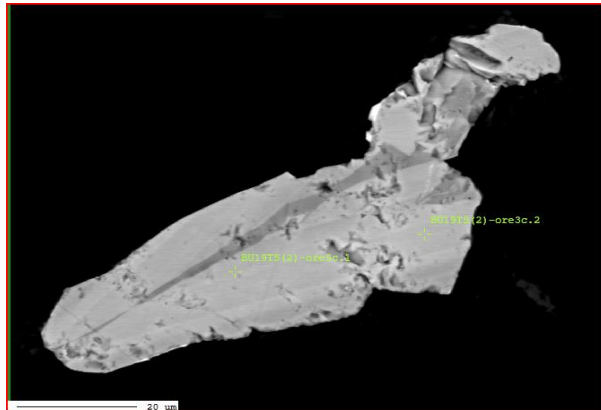
Ore3a



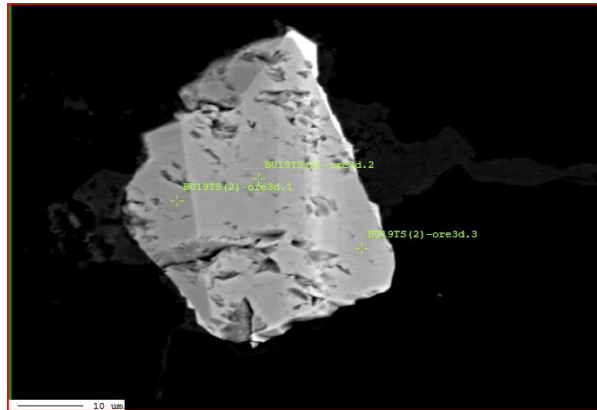
Ore3b



Ore3c

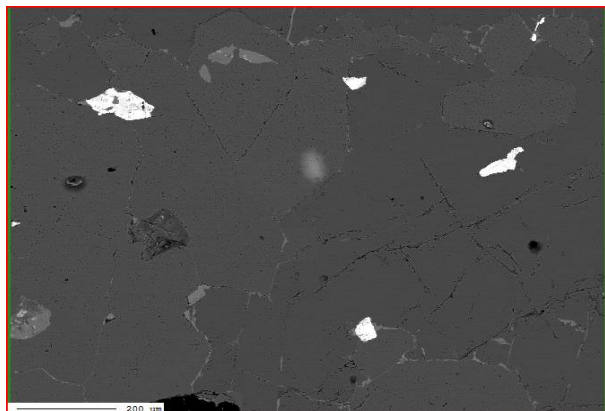


Ore3d

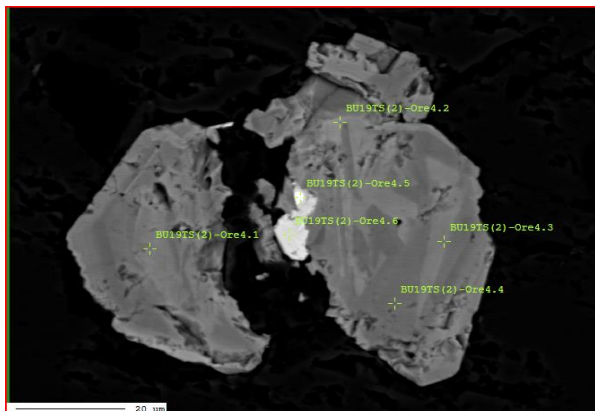


BU19TS(2) Partially altered phosphatic nodule

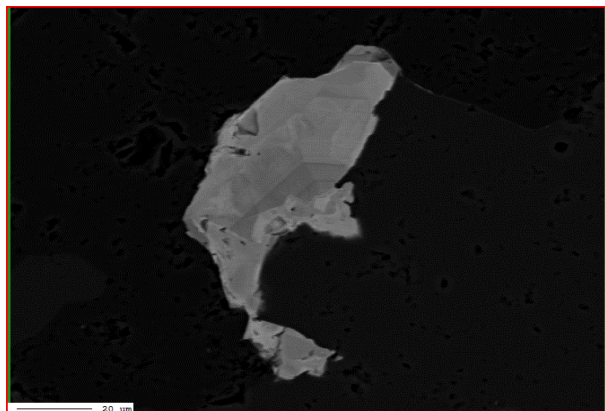
Ore3 - area



Ore4



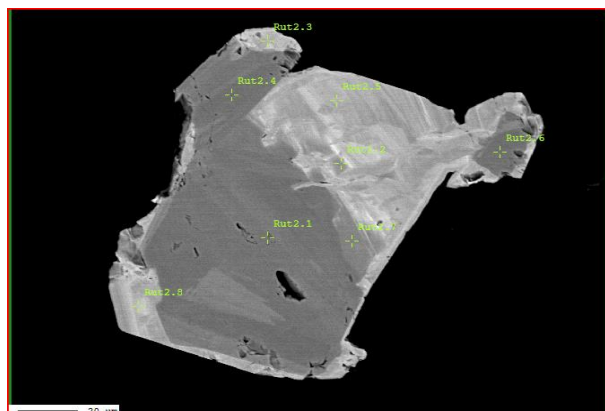
Ore5



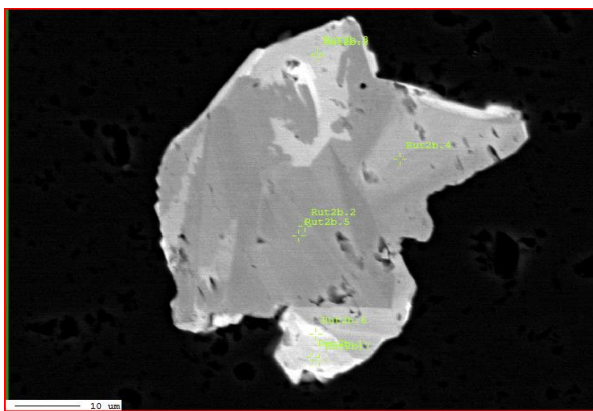
BU19w

Partially altered phosphatic nodule

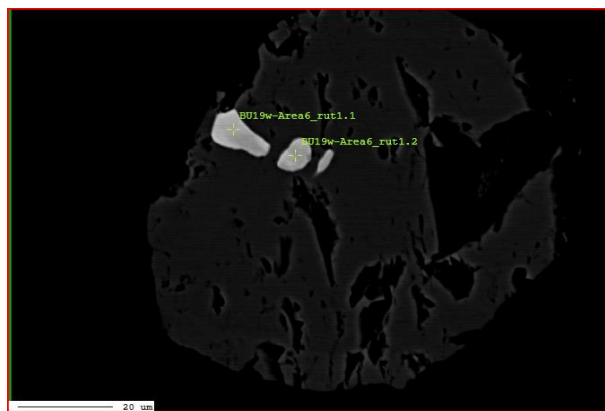
Ore2a



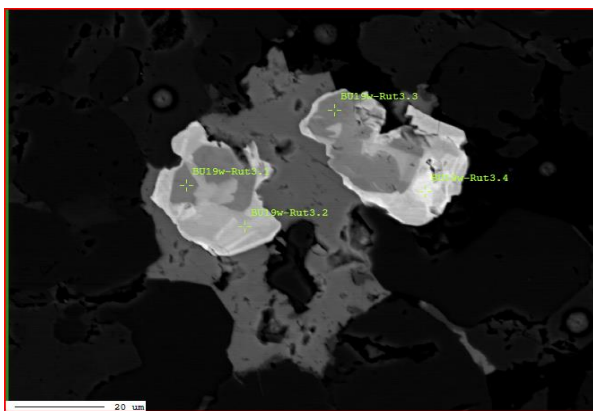
Ore2b



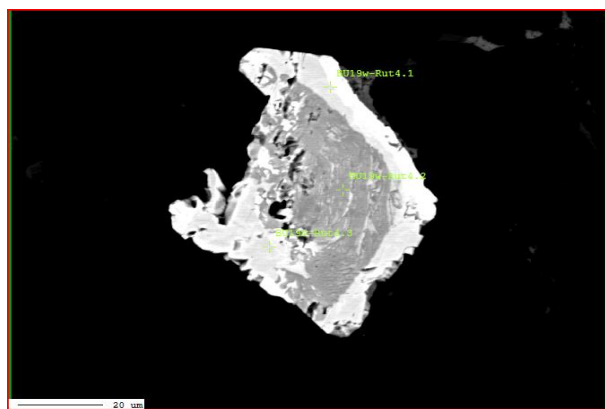
Ore1



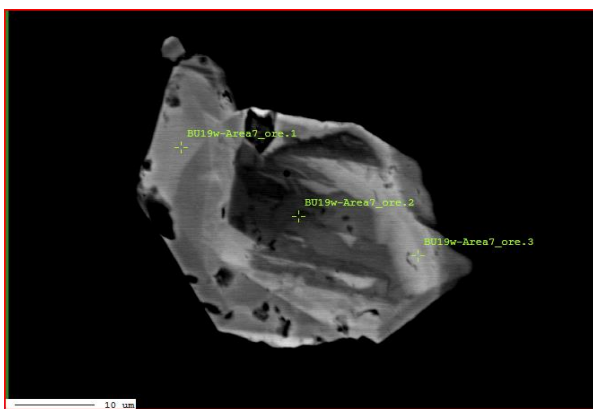
Ore3



Ore4



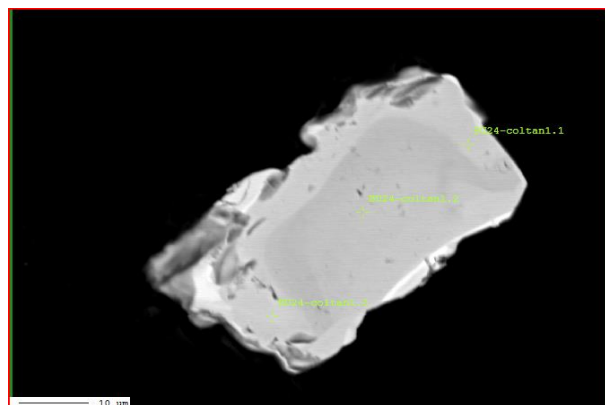
Ore5



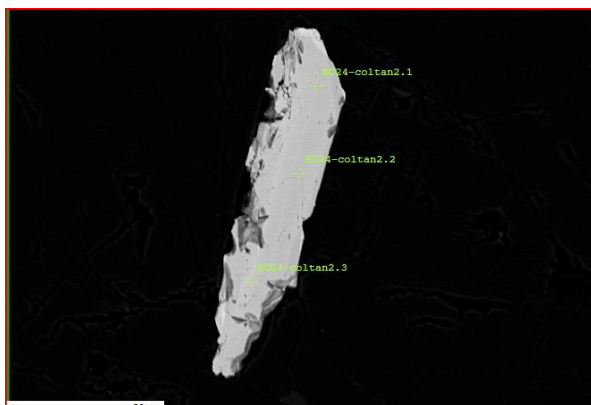
BU24

Albitized facies

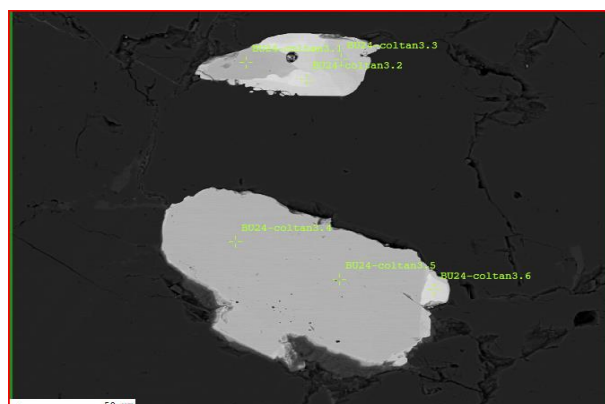
Ore1



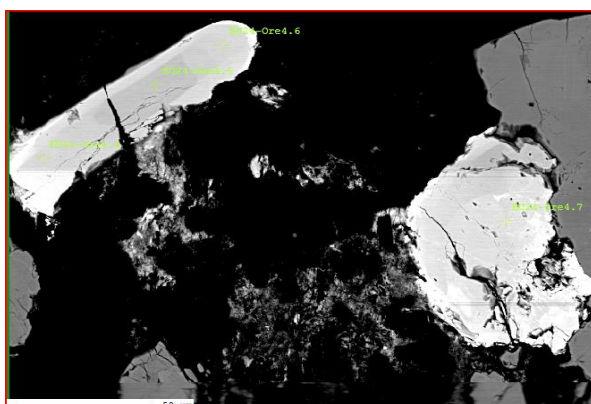
Ore2



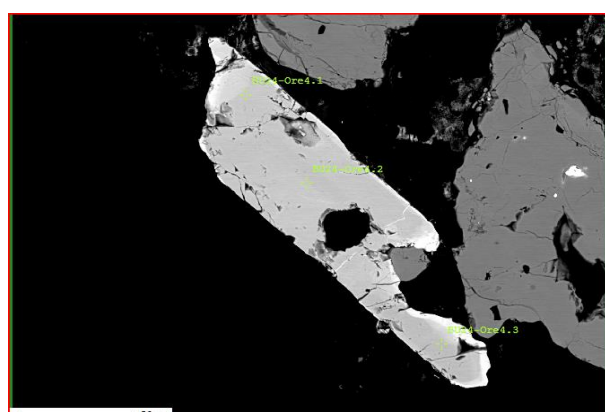
Ore3



Ore4 - detail 1



Ore4 - detail 2



Ore4 - area

