

## Supplementary Figure S1

The following micro photographs (reflected microscopy) show typical features of sulfides in Balmuccia peridotites and pyroxenites analyzed by LA-ICP-MS in this study. The sulfides are intergrown assemblages of pentlandite, pyrrhotite and chalcopyrite. They are fresh and occur mostly interstitially with typical grain sizes of 0.05-1 mm. The long black lines are laser ablation tracks. Traces of few  $\mu\text{m}$  size sulfide grains also occur along healed fractures next to larger interstitial sulfide aggregates (Fig. S1 a, c, e, f).

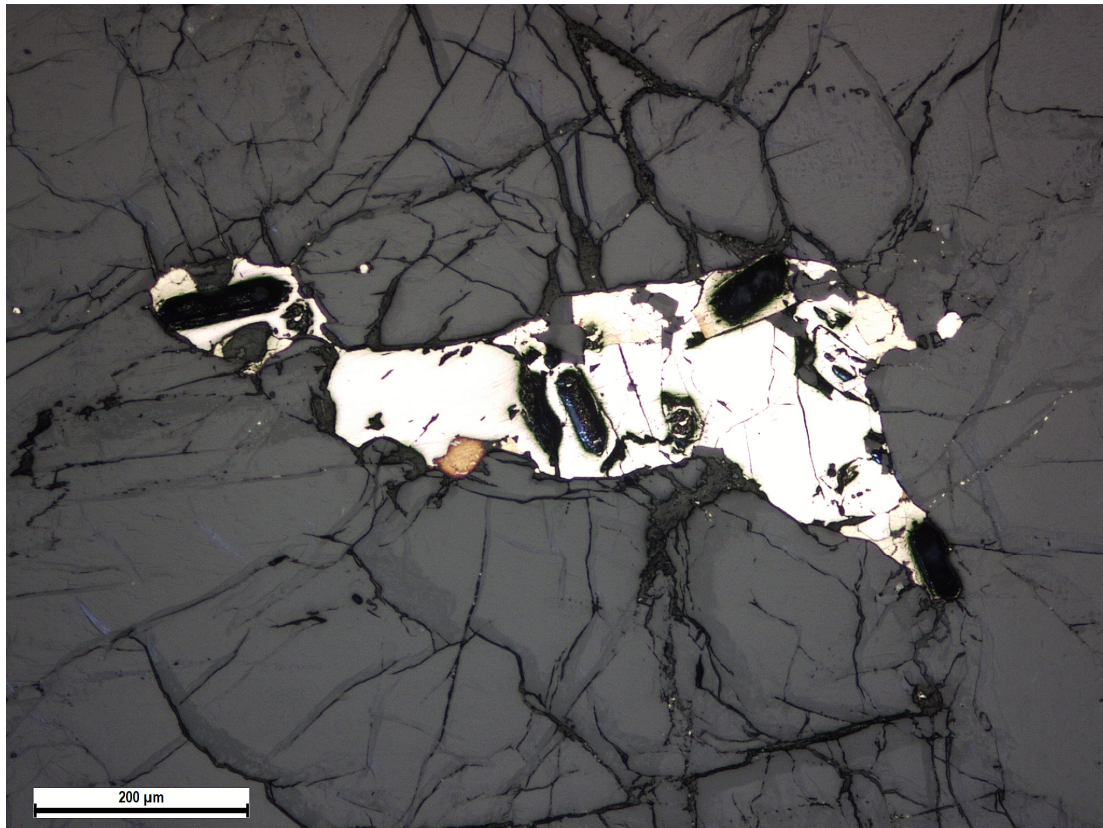


Fig. S1 a: BM11-2A-Peridotite

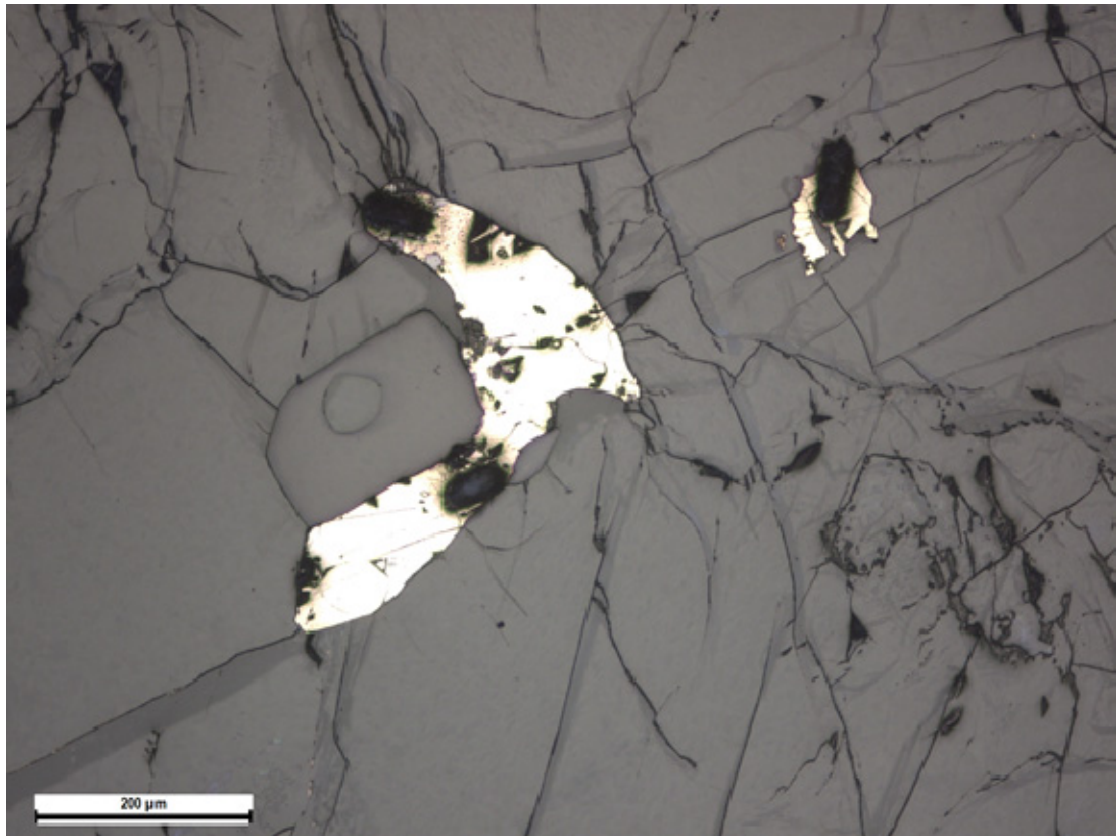


Fig. S1 b: BM11-10-Peridotite

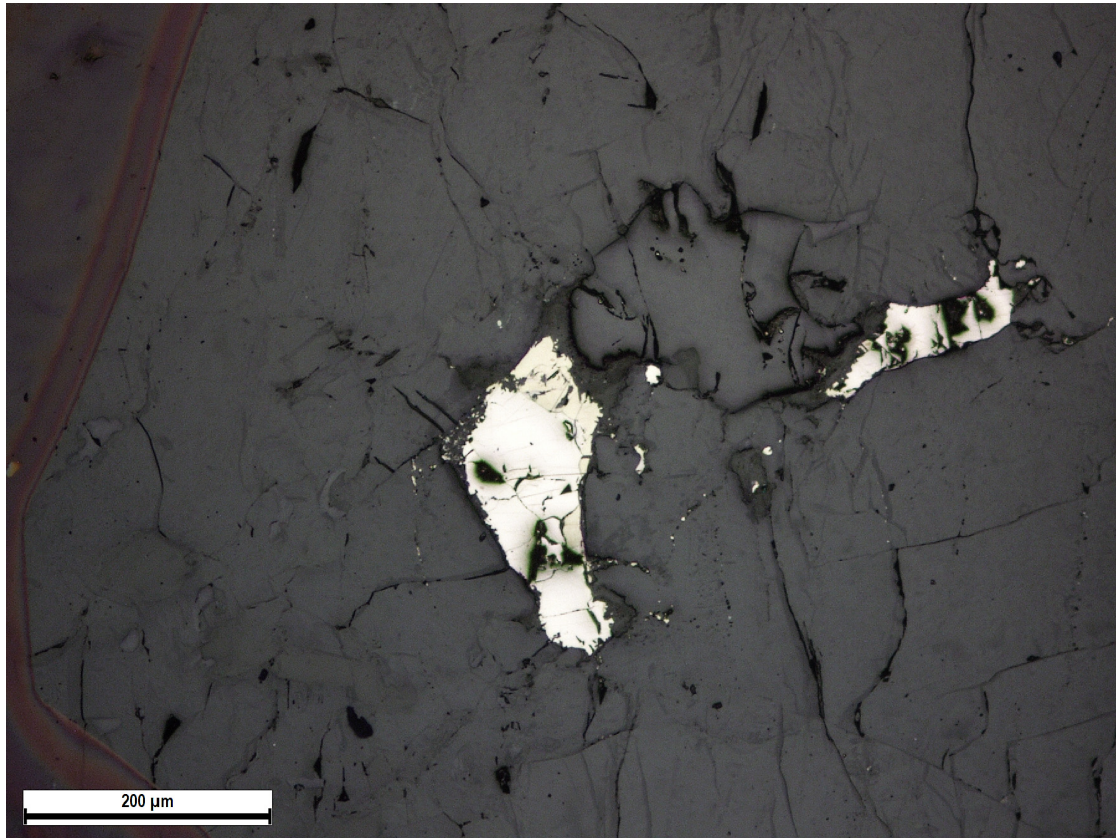


Fig. S1 c: BM11-11-Peridotite



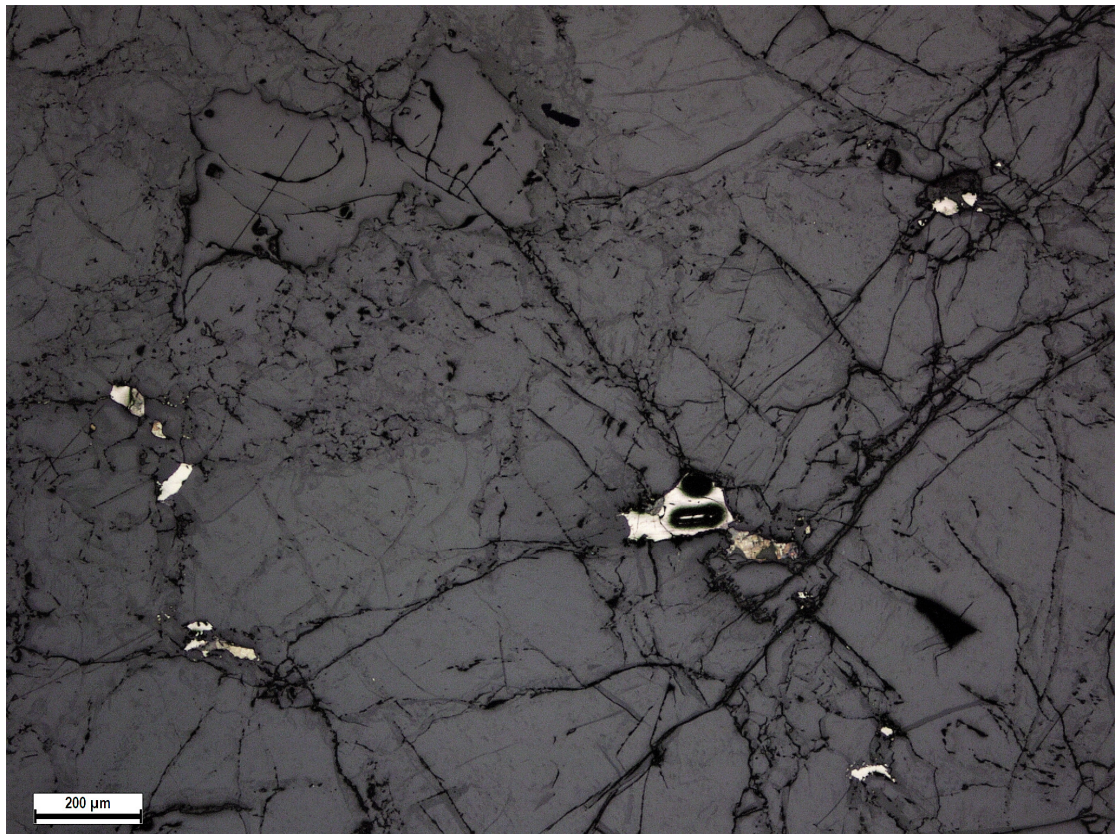


Fig. S1 d: BM11-18-Peridotite

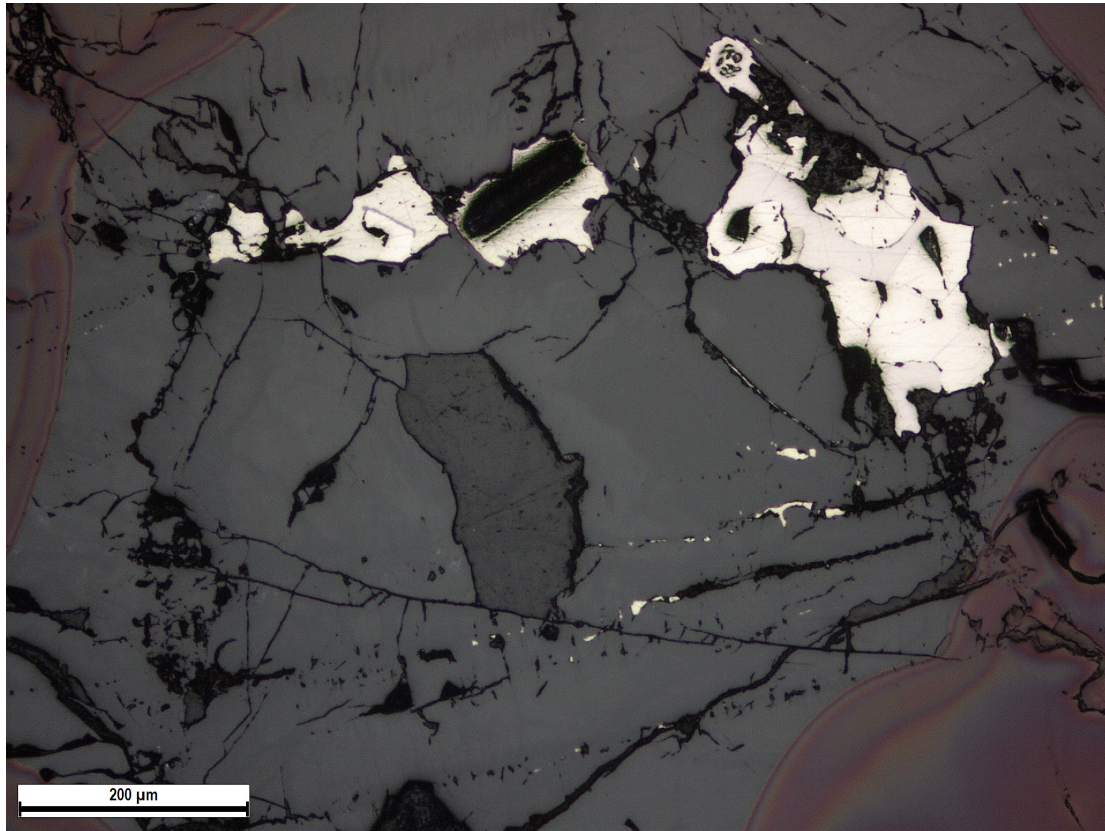


Fig. S1 e: BM11-16A-Spinel clinopyroxenite



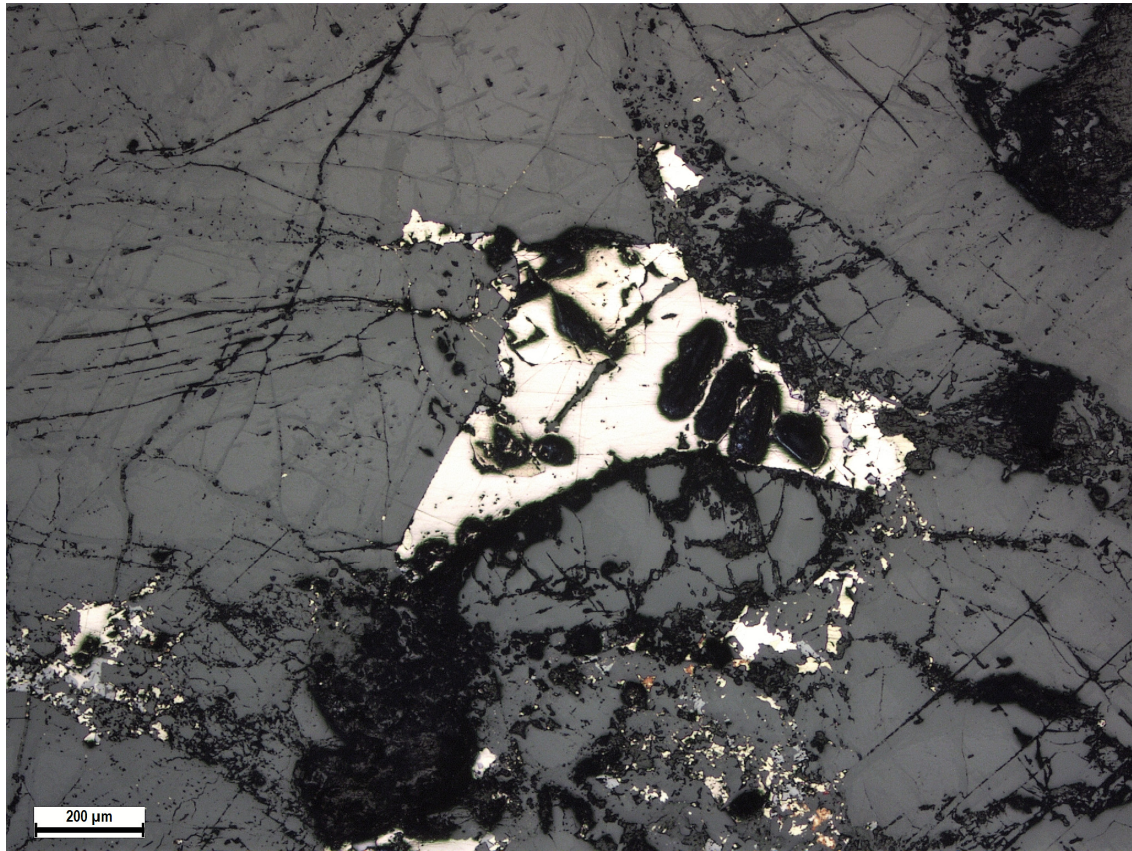


Fig. S1 f: BM11-28B-Spinel clinopyroxenite

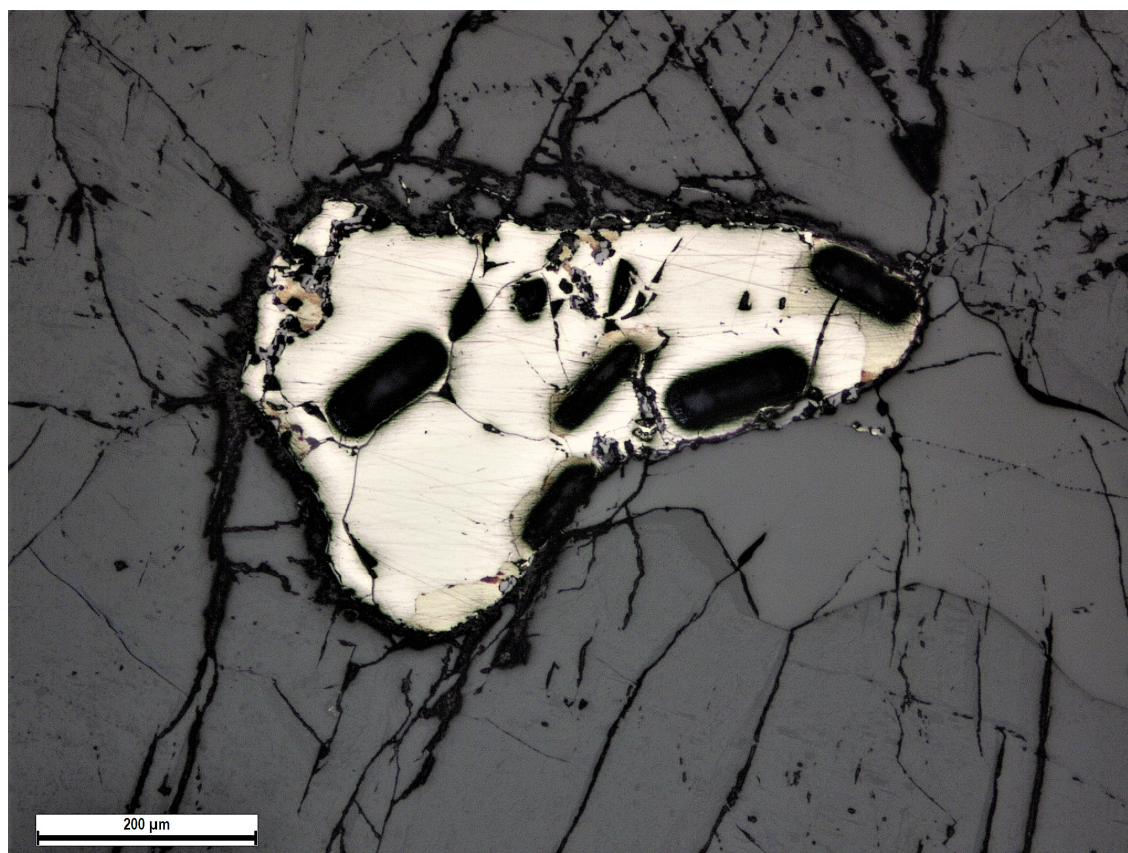


Fig. S1 g: BM11-7D-Orthopyroxenite