

Supplementary Data

Expanding the speciation of terrestrial molybdenum: discovery of polekhovskiyite, MoNiP_2 , and insights into the sources of Mo-phosphides in the Dead Sea Transform area

Sergey N. Britvin, Mikhail N. Murashko, Oleg S. Vereshchagin, Yevgeny Vapnik, Vladimir V.

Shilovskikh, Natalia S. Vlasenko, Vitalii V. Permyakov

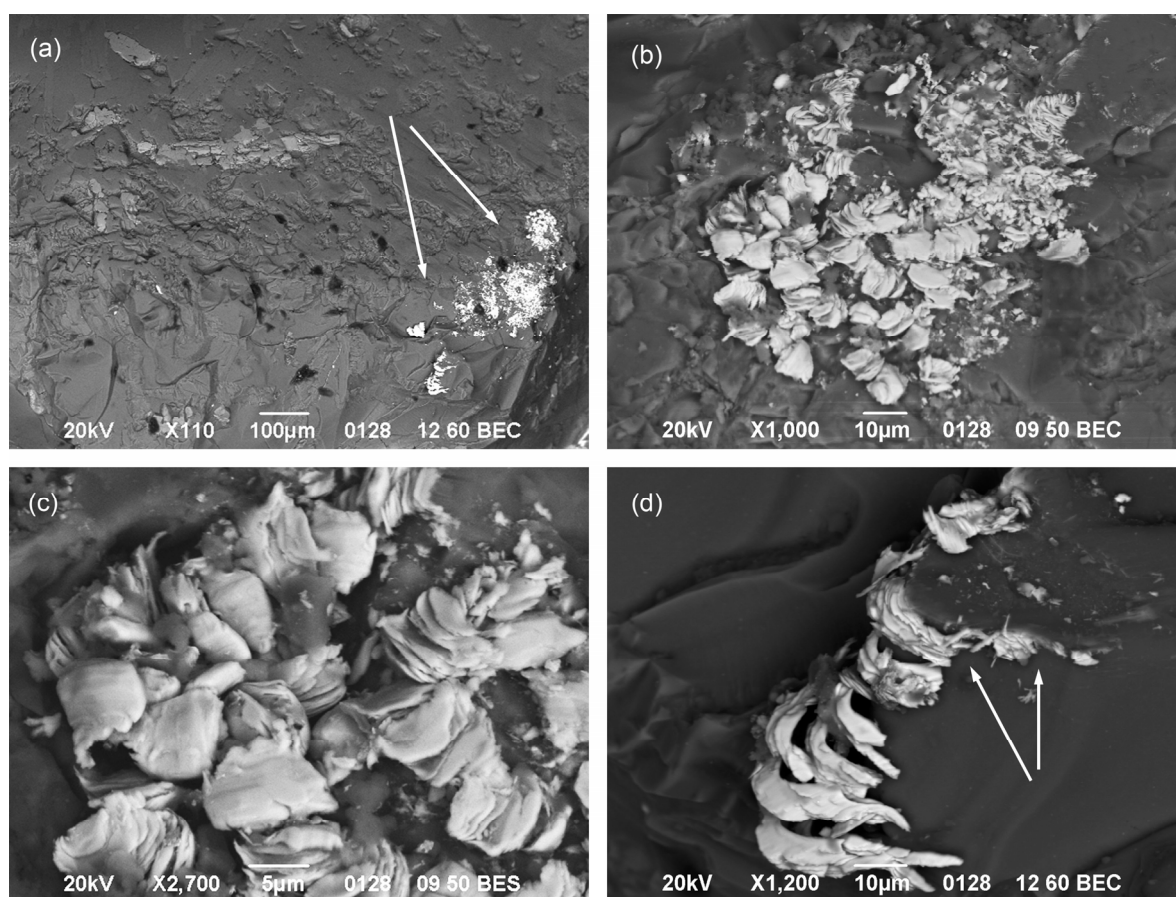


Figure S1. An example of anthropogenic contamination of geological sample with nickel-phosphorus brazing alloy. BNi-6 alloy of the composition $(\text{Ni}_{3.89}\text{Fe}_{0.03})_{3.92}\text{P}_{1.08}$ is spread over the face of the drill core. (a) An overview showing the BNi-6 field on the drill core surface (indicated by arrows). (b,c) Detailed views of the texture of BNi-6 boring scrap on silicate matrix. (d) An illustration of the case where BNi-6 particles are impressed into the matrix cracks (marked by arrows), mimicking the “intergrowths” between brazing alloy and host silicate minerals. SEM BSE images.