

Fig. A1 Chondrite-normalized REE distribution patterns for three types of titanite from the biotite monzonite

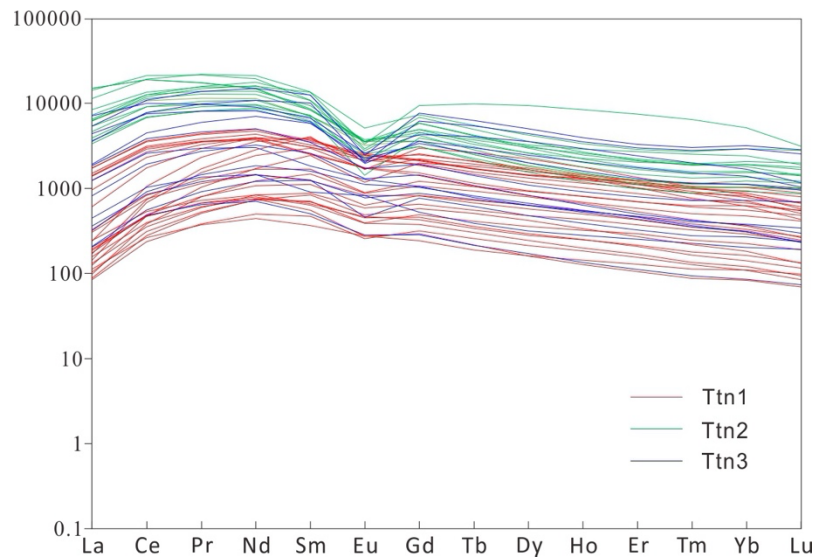
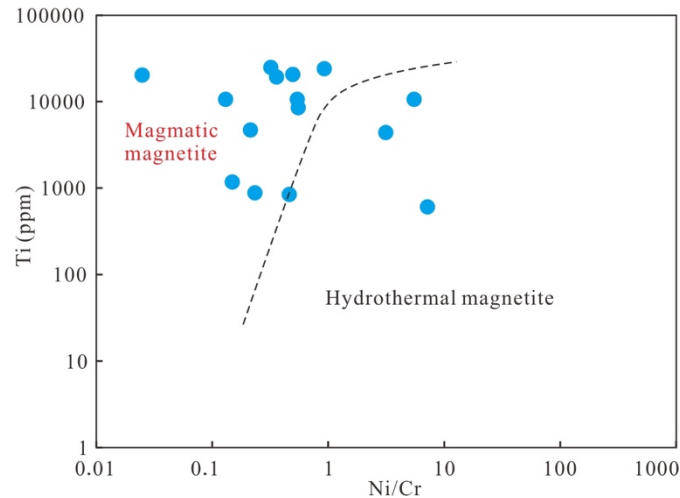


Fig. A2 Discrimination of magnetite from the monzonite based on Ti vs. Ni/Cr, after Dare et al. (2014)



Trace elements in the magnetite show large variations for Mg (31-17598 ppm), Al (296-21677 ppm) and Ti (846-24879 ppm), enrichment in V (649-1209), and low concentrations of Cr (5.2-136.2 ppm), Co (1.3-6.8 ppm) and Ni (2.6-8.0 ppm) (Supplementary Table 2).